

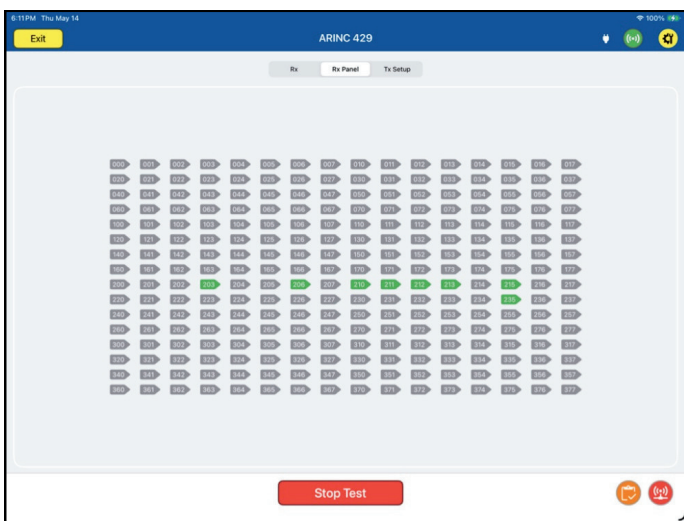
ARTS-7000: ARINC 429

The ARTS-7000 ARINC 429 transceiver can generate and receive labels on the ARINC 429 database. This can assist in diagnosing issues related to wiring or to simulate communication to and from various aircraft systems.



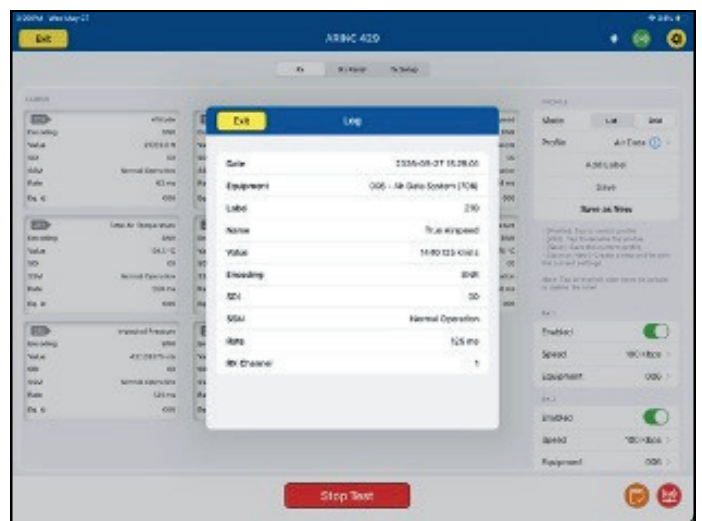
- 1 Tx & 2 Rx Ports
- Simple label configuration
- Profiles for common uses
- Multiple views: Grid | List | Panel
- Integration into any ARTS-7000

Rx Panel Mode



Rx Panel shows all labels received on either Rx channel for quick troubleshooting and diagnosis.

Rx Grid Label Log



Access all data related to the labels received in Rx Grid mode.

ARTS-7000 ARINC 429 SPECIFICATIONS

Capability	Attribute	Values	Resolution	Accuracy
Tx	Multiple label transmission rate	User defined	± 1 ms	$\pm 5\%$
	Speed	12.5 Kbps	10 ± 5 μ s	$\pm 1\%$
		100 Kbps	1.5 ± 0.5 μ s	$\pm 1\%$
Rx	Max labels per channel	32	N/A	$\pm 1\%$
	Speed	12.5 Kbps	N/A	$\pm 1\%$
		100 Kbps	N/A	$\pm 1\%$

Item	Type	Description / Notes	Part Number
ARTS-7000 ARINC 429 Module	Module	Module for ARTS-7000	116-0514
ARINC 429. 20 ft, 3.5 mm cable to alligator clips	Cable	Cable with 3.5 mm connector to alligator clips for easy integration with the unit under test.	129-1883

ARTS-7000 (FULL SYSTEM)

