

ARTS-7000-M1 AVIONICS RADIO TEST SYSTEM

Meet the ARTS-7000-M1, a military/defense focused Avionics Radio Test System engineered to fulfill all aircraft radio test requirements in **one box**. It is designed to **reduce costs & simplify aircraft testing**.



The ARTS-7000-M1 implements a rugged design and quick setup, It is modular to scale with test requirements. The ARTS-7000-M1 is built to test multiple defense applications: Helicopters, Fighters, UAVs, and Transport aircraft.

Choose the set of capabilities you need: COM, NAV, DME, ELT, TACAN, Transponder Modes 1/2/3A, Modes C/S, ADS-B, TCAS, UAT, GPS Simulation, VSWR, Altitude Monitoring, CPDLC, & ARINC 429.






- Service & Calibration Centers across the world
- 4-5 DAY turn on calibration
- AOG Loaner Units available



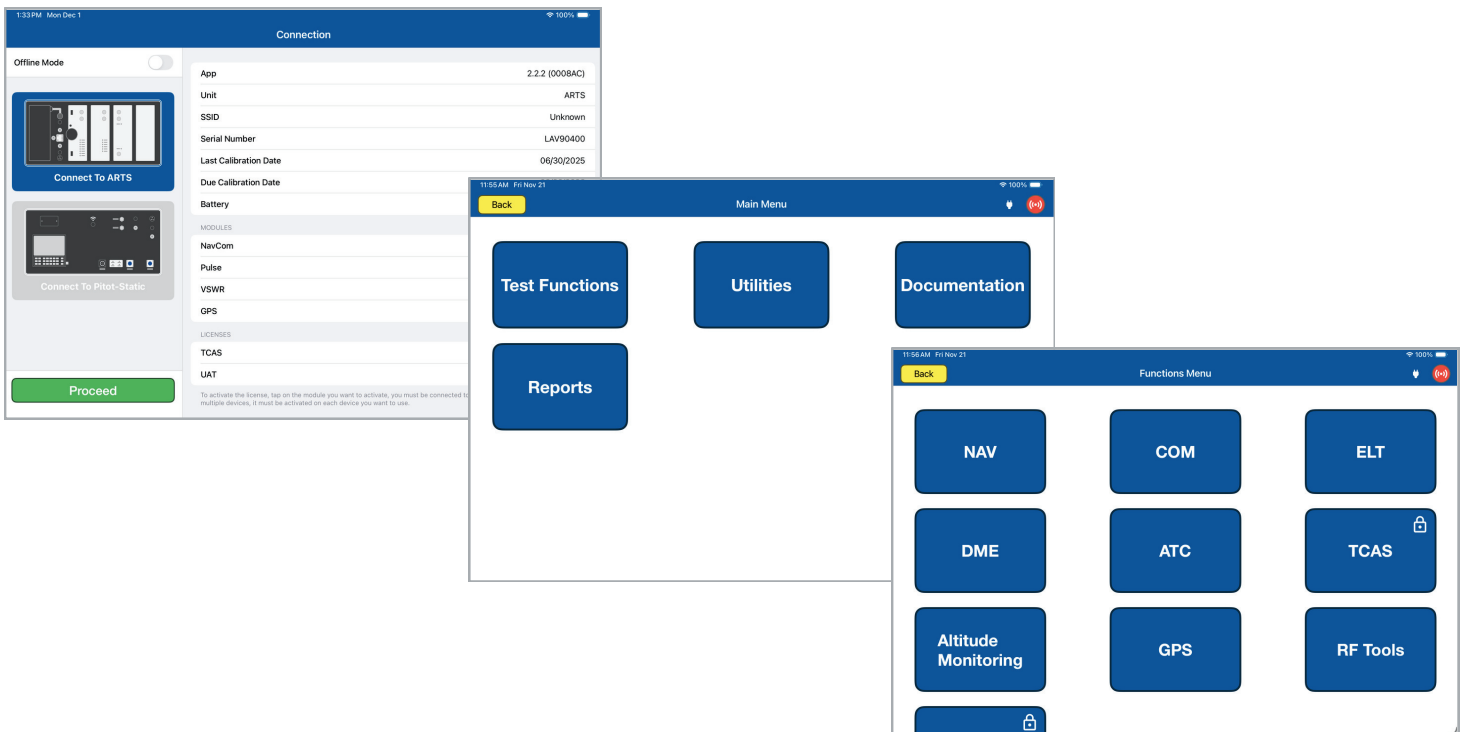
- Technical support & training INCLUDED
- 3-YEAR standard warranty
- FREE Operational SW Updates
- Upgrades available to expand capabilities

KEY FEATURES

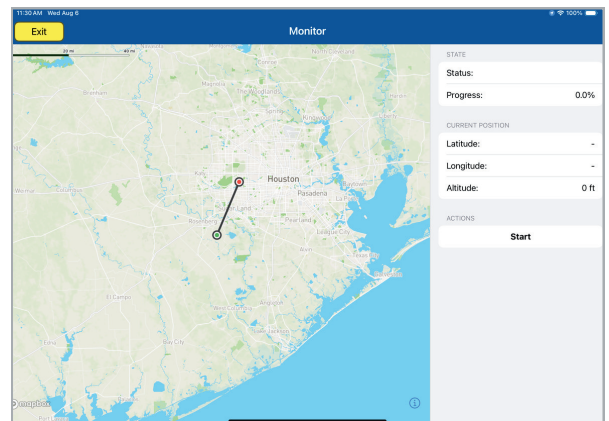
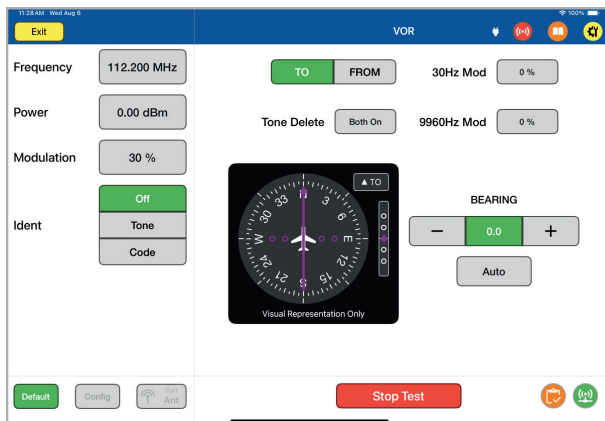
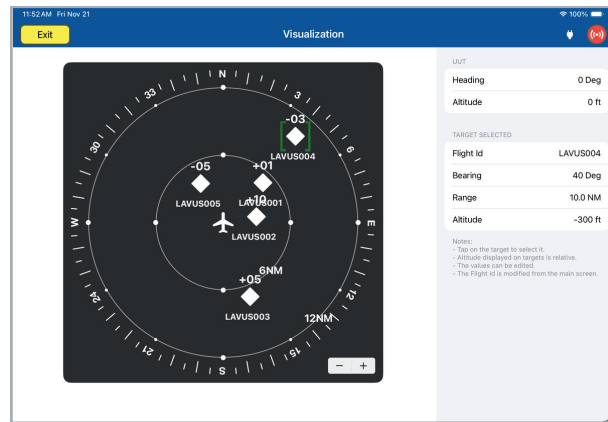
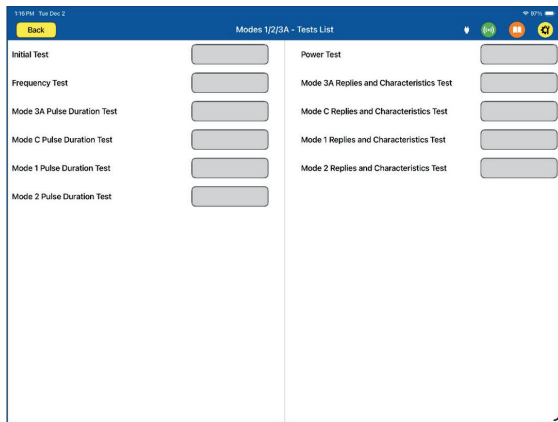
		
Multi-function capability in a single box	Quick setup & control of test-set	Integrated self-test & fault-finding tools
Configurable to meet user-specific requirements – reduces cost	Antenna Alignment tool to save time	TACAN & Modes 1/2/3A available
Expandable within same system for additional functions	Upgradeable software	Integrated transponder & altimeter checks with Laversab ADTS (91.413 check)
Preset and user configurable test scenario and parameters	Transportable system with rugged enclosure	Fully integrated ILS & MKR scenario
Removable Battery to test aircraft anywhere	Downloadable Test Reports for each aircraft under test	GPS waypoint simulator
Worldwide service and support	Built-in context-specific user manual	ARINC 429 transceiver for databus verification & instrument debugging

A new concept in Tester/Aircraft/Technician integration.

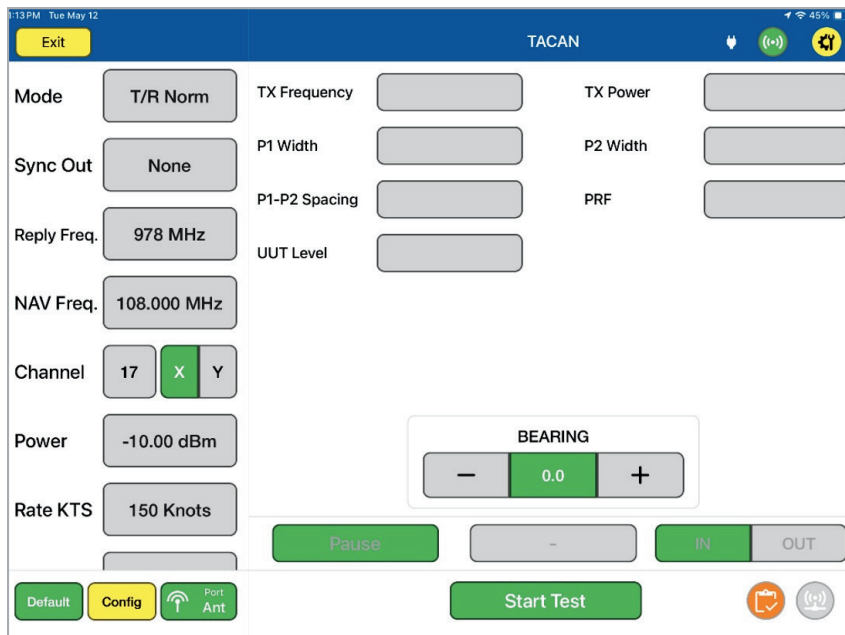
With clear menus, hot keys, predefined scenarios, customizable limits, and intuitive functions, the ARTS-7000-M1 is easy to learn and use.



Each test function has a dedicated page giving the operator full access to test parameters, configuration, and results. All test functions can be setup and completed by a single technician.



From simple Go/No-Go tests to a full engineering diagnostic – the ARTS provides all the capabilities, speed and details that you need.



ARTS-7000-M1 can test TACAN radios through multiple modes: T/R Normal, T/R Range only, T/R Inverse, A/A Beacon, A/A Range Only, A/A Inverse

CAPABILITIES & SPECIFICATIONS

COMMUNICATIONS	AM / FM HF SSB SelCal CPDLC-VDL Mode 2 (optional)
NAVIGATION	VOR ILS - Localizer & Glideslope Marker Beacon
ELT / ELT-DT	121.5 / 243 / 406 MHz
TACAN	T/R Normal, T/R Range only, T/R Inverse, A/A Beacon, A/A Range Only, A/A Inverse
DME	DME DME & ILS DME & VOR
TRANSPONDER	Modes 1/2/3A Mode S ATCRBS Modes A & C ADS-B IN/OUT TIS-B 1090 MHz UAT 978 MHz: TIS-B, FIS-B, ADS-B (optional)
TCAS	TCAS 1 & 2, ACAS, TIS (optional)

GPS	GPS Signal Simulator
VSWR	VSWR meter Distance to Fault
ARINC 429	ARNC 429 Transceiver
ALTITUDE MONITORING	ARTS-7000 & Laversab ADTS integration
TOOLS	Power meter Frequency counter
POWER REQUIREMENTS	0-260 VAC, 47-65 Hz or 28 VDC, 25 W Or Removable battery: 8-hour operation
INTERFACES	RS232, USB
DIMENSIONS & WEIGHT	Main unit: 22" x 14" x 9"; 30 lbs.
ENVIRONMENTAL	Operating temp: -20° to 60°C Storage temp.: -40° to 75°C Humidity: 5 to 100%

Please see full technical Data sheet for details.

