

ARTS-7000 AVIONICS RADIO TEST SYSTEM

Meet the ARTS-7000, a Wi-Fi enabled Avionics Radio Test System engineered to fulfill all aircraft radio test requirements in **one box**. The ARTS 7000 combines multiple test functions in a single unit. It is designed to **reduce up-front costs & simplify aircraft testing**.



The ARTS-7000 features an intuitive user interface and quick setup, so you can test quickly and get your aircraft back in the air. It is modular, so your system scales with your test requirements. The ARTS-7000 is built to test any airborne platform – from GA, Helicopters, & eVTOLs to Business Jets & Commercial Airlines.

Choose the set of capabilities you need: COM, NAV, DME, ELT, Transponder, ADS-B, TCAS, UAT, GPS Simulation, VSWR, Altitude Monitoring, CPDLC, & ARINC 429.






- Service & Calibration Centers across the world
- 4-5 DAY turn on calibration
- AOG Loaner Units available



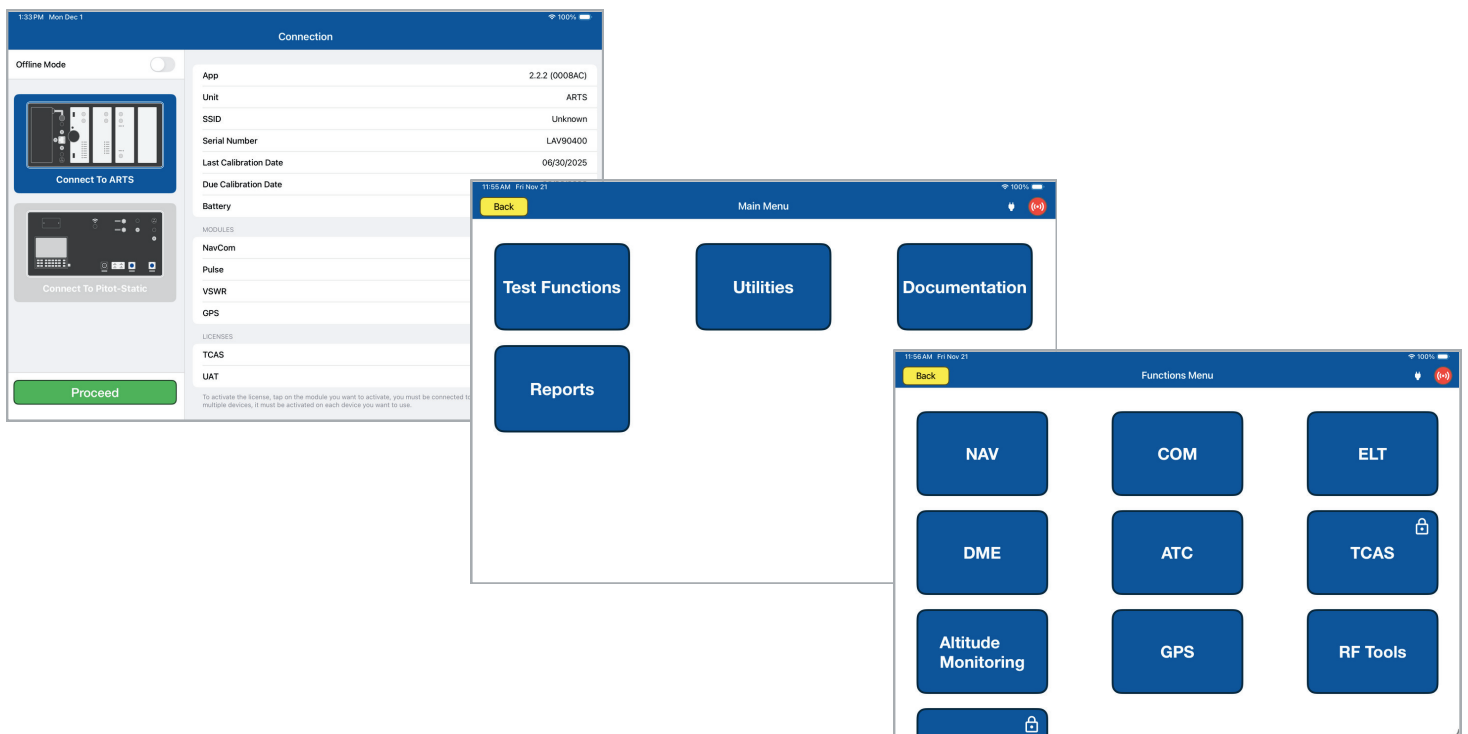
- Technical support & training INCLUDED
- 3-YEAR standard warranty
- FREE Operational SW Updates
- Upgrades available to expand capabilities

KEY FEATURES

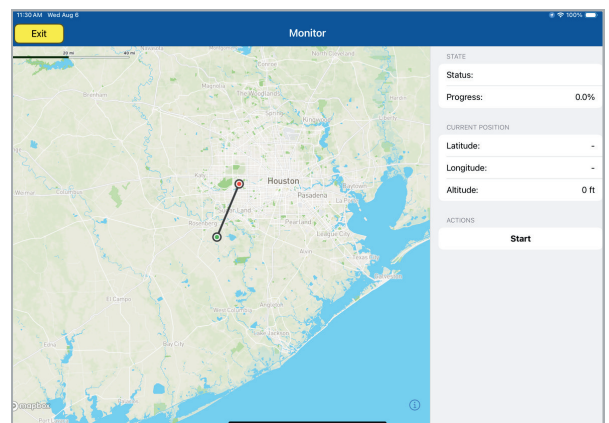
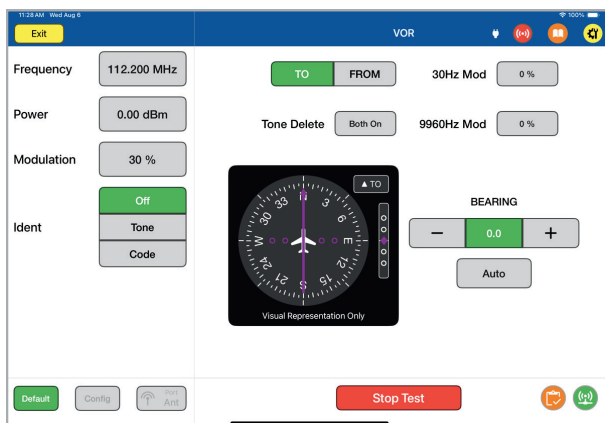
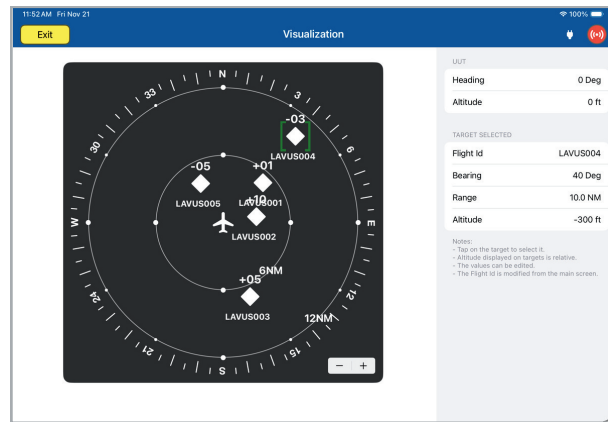
		
Multi-function capability in a single box	Quick setup. Wireless control of test-set	Integrated self-test & fault-finding tools
Configurable to meet user-specific requirements – reduces cost	Antenna Alignment tool to save time	CPDLC over VDL Mode 2 system verification.
Expandable within same system for additional functions	Downloadable software upgrades	Integrated transponder & altimeter checks with Laversab ADTS (91.413 check)
Preset and user configurable test scenario and parameters	Secure Wi-Fi network generated by test set	Fully integrated ILS & MKR scenario
Removable Battery to test aircraft anywhere	Downloadable Test Reports for each aircraft under test	GPS waypoint simulator
Worldwide service and support	Transportable system with rugged enclosure	ARINC 429 transceiver for databus verification & instrument debugging.

A new concept in Tester/Aircraft/Technician integration.

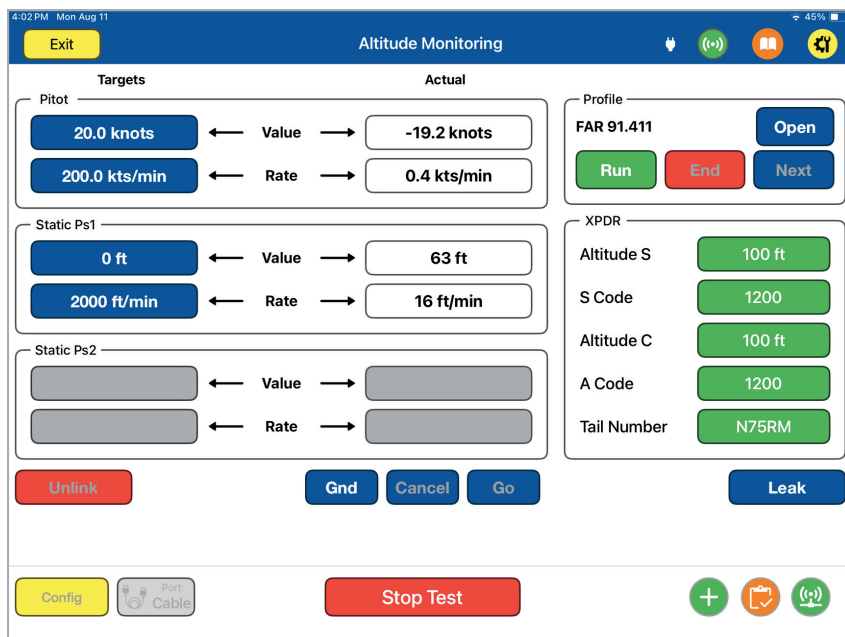
Commercially available tablets are used to control the ARTS, creating a cost-effective and simple test setup. With clear menus, hot keys, predefined scenarios, customizable limits, and intuitive functions, the ARTS is easy to learn and use.



Each test function has a dedicated page giving the operator full access to test parameters, configuration, and results. All test functions can be setup and completed by a single technician. The familiarity of tablets and the simplicity of the ARTS software minimizes training time. If you can use a tablet, you can operate the ARTS.



From simple Go/No-Go tests to a full engineering diagnostic – the ARTS provides all the capabilities, speed and details that you need.



Unique Feature:

Altimeter checks and simultaneous Mode S output tests (FAR 91.413) are simplified by controlling a Laversab ADTS through the ARTS-7000.

CAPABILITY & SPECIFICATIONS

COMMUNICATIONS	AM / FM HF SSB SelCal CPDLC-VDL Mode 2 (optional)
NAVIGATION	VOR ILS - Localizer & Glideslope Marker Beacon
ELT / ELT-DT	121.5 / 243 / 406 MHz
DME	DME DME & ILS DME & VOR
TRANSPONDER	Mode S ATCRBS Modes A & C ADS-B IN/OUT TIS-B 1090 MHz UAT 978 MHz: TIS-B, FIS-B, ADS-B (optional)
TCAS	TCAS 1 & 2, ACAS, TIS (optional)

GPS	GPS Signal Simulator
VSWR	VSWR meter Distance to Fault
ARINC 429	ARNC 429 Transceiver
ALTITUDE MONITORING	ARTS-7000 & Laversab ADTS integration
TOOLS	Power meter Frequency counter
POWER REQUIREMENTS	0-260 VAC, 47-65 Hz or 28 VDC, 25 W Or Removable battery: 8-hour operation
INTERFACES	RS232, USB
DIMENSIONS & WEIGHT	Main unit: 22" x 14" x 9"; 30 lbs.
ENVIRONMENTAL	Operating temp: -20° to 60°C Storage temp.: -40° to 75°C Humidity: 5 to 100%

Please see full technical Data sheet for details.



ARTS - 7000