

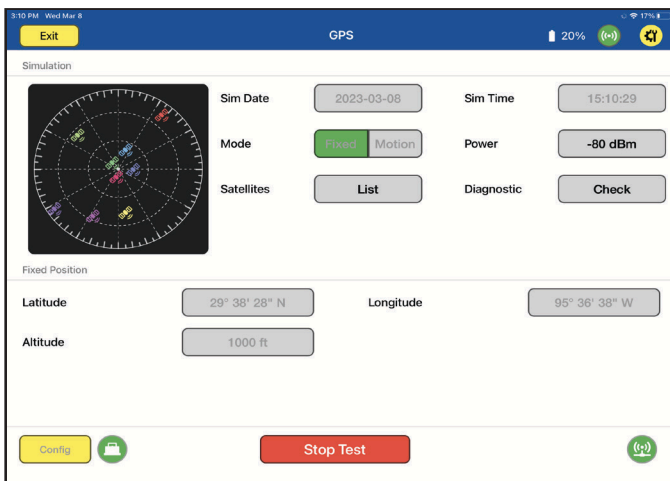
ARTS-7000 GPS SIMULATOR

The ARTS-7000 GPS Simulator generates a full constellation GPS signal to exercise an aircraft GPS receiver. It enables ADS-B Out testing and can create both a fixed position or motion path while in the hangar.



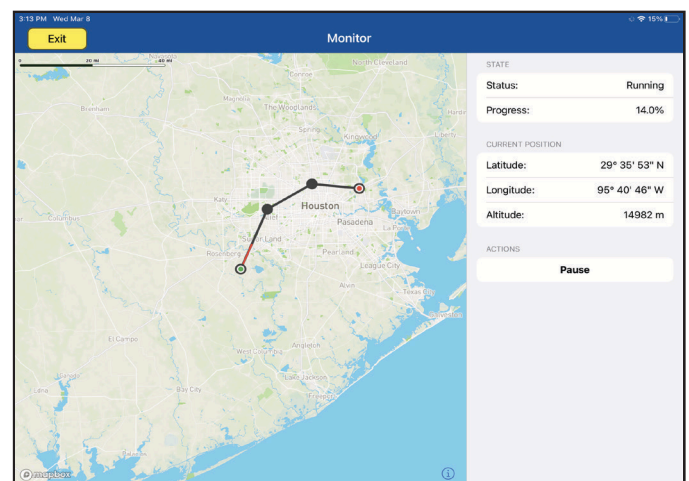
- ▶ GPS Simulator with Fixed & Motion Modes
- ▶ Full-constellation GPS output
- ▶ Highly intuitive Route Creator
- ▶ Over-the-air updates to Almanac
- ▶ GPS Coupler included

GPS FIXED MODE



Select up to 10 active satellites to generate a time and position signal. Easily modify each satellite's health.

GPS MOTION MODE



Create aircraft routes on an interactive map via GPS waypoints.

SPECIFICATIONS

Attribute	Values	Resolution
RF OUTPUT LEVEL		
Output Power Range (Direct)	-100 to -145 dBm typical	1 dB
Output Power Range (Coupler)	-120 to -165 dBm typical	1 dB
Spurious	<-20 dBc over 20 MHz BW <-70 dBc out of band	
Harmonics	<-140 dBc	
MASTER OSCILLATOR		
10 MHz	Yes	
Temperature Stability	+/- 75 ppb (0.075 ppm)	
GPS SIGNALS	L1	
STATIC SIMULATION	Yes	
DYNAMIC SIMULATION	Yes	
NUMBER OF CHANNELS	10	
SATELLITE HEALTH STATES	GOOD / BAD	
ALMANAC UPDATE	Manual or Automatic file update	
MAXIMUM RELATIVE VELOCITY	+/-1166 kts	
MAXIMUM RELATIVE ACCELERATION	40 m/s ²	
MAXIMUM RELATIVE JERK	1000 m/s ³	
MAXIMUM ALTITUDE	164,000 ft	
PSEUDO RANGE ACCURACY	0.5 m RMS	
PSEUDO RANGE RATE ACCURACY	Time accuracy 5 ns RMS wrt reference clock	

ARTS-7000 (FULL SYSTEM)

