

# ARTS-7000 AVIONICS RADIO TEST SYSTEM

Meet the ARTS-7000, a Wi-Fi enabled Avionics Radio Test System engineered to fulfill all aircraft radio test requirements in **one box**. The ARTS 7000 combines multiple test functions in a single unit. It is designed to **reduce up-front costs & simplify aircraft testing**.



The ARTS 7000 features an intuitive user interface and quick setup, so you can test quickly and get your aircraft back in the air. It is modular, so your system scales with your test requirements. The ARTS 7000 is built to test any airborne platform – from General Aviation & Commercial Airliners to Helicopters & Military applications.

Choose the set of capabilities you need: COM, NAV, DME, ELT, Transponder, ADS-B, TCAS, UAT, GPS Simulation, VSWR, Air Data integration, and CPDLC.






- Service & Calibration Centers across the world
- 4-5 day turn on calibration
- AOG Loaner Units available



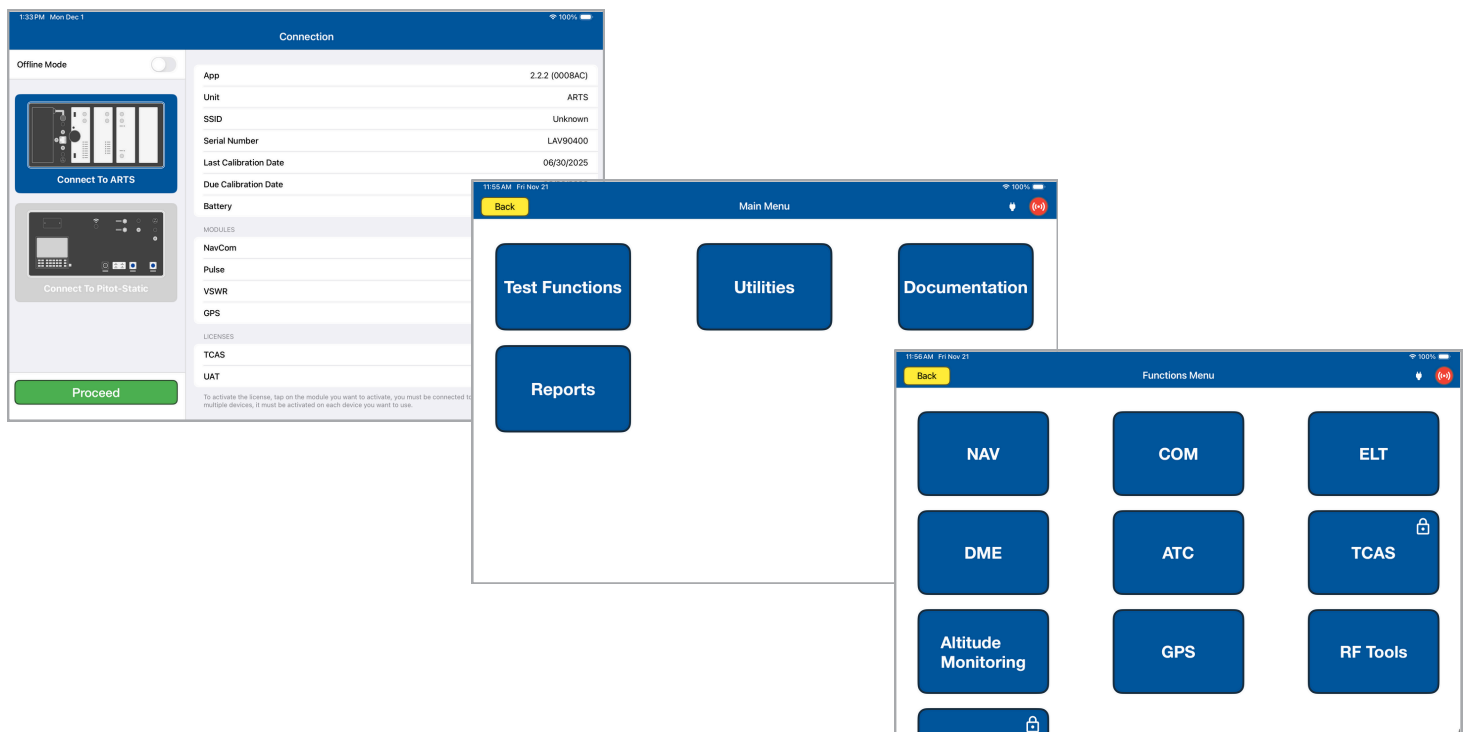
- Technical support & training INCLUDED
- 3-YEAR standard warranty
- FREE Operational SW Updates
- Upgrades available to expand capabilities

## KEY FEATURES

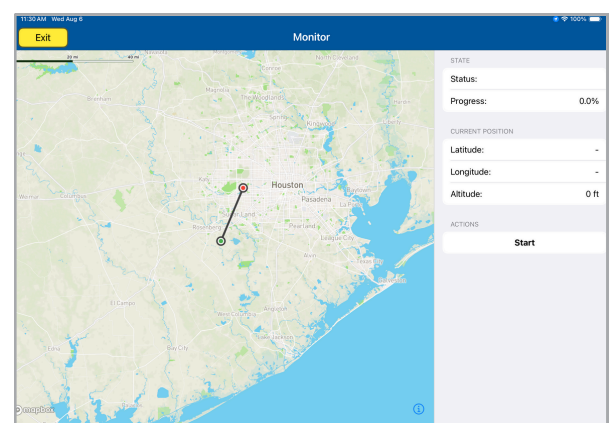
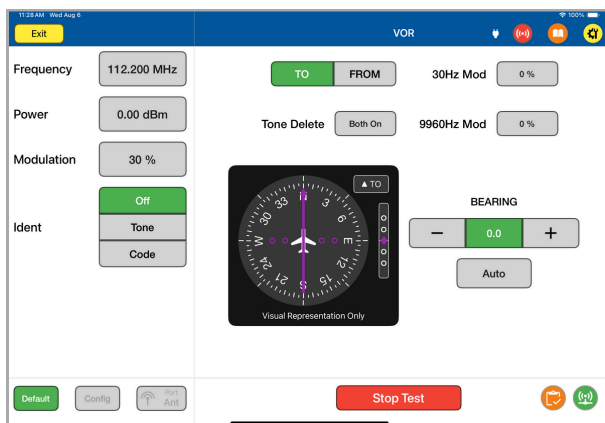
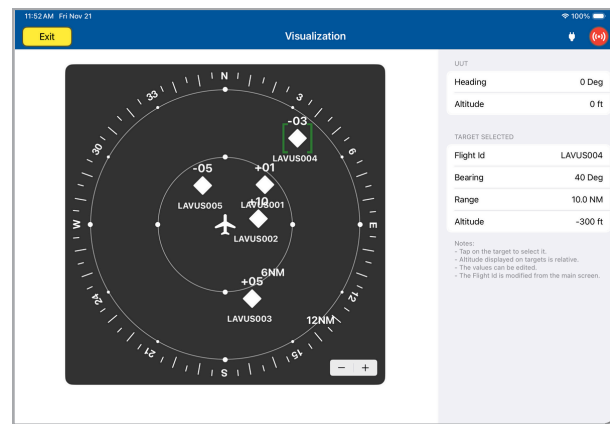
		
Multi-function capability in a single box	Quick setup. Wireless control of test-set	Integrated self-test & fault-finding tools
Configurable to meet user-specific requirements – reduces cost	Antenna Alignment tool to save time	Built in quick confidence check
Expandable within same system for additional functions	Downloadable software upgrades	Integrated Mode S with Laversab ADTS for altimeter checks
Preset and user configurable test scenario and parameters	Secure Wi-Fi network generated by test set	Fully integrated ILS & MKR scenario
Removable Battery to test aircraft anywhere	Easy export of stored results	Fully integrated DME & VOR scenario
Worldwide service and support	Transportable system with rugged enclosure	GPS waypoint simulator

### A new concept in Tester/Aircraft/Technician integration.

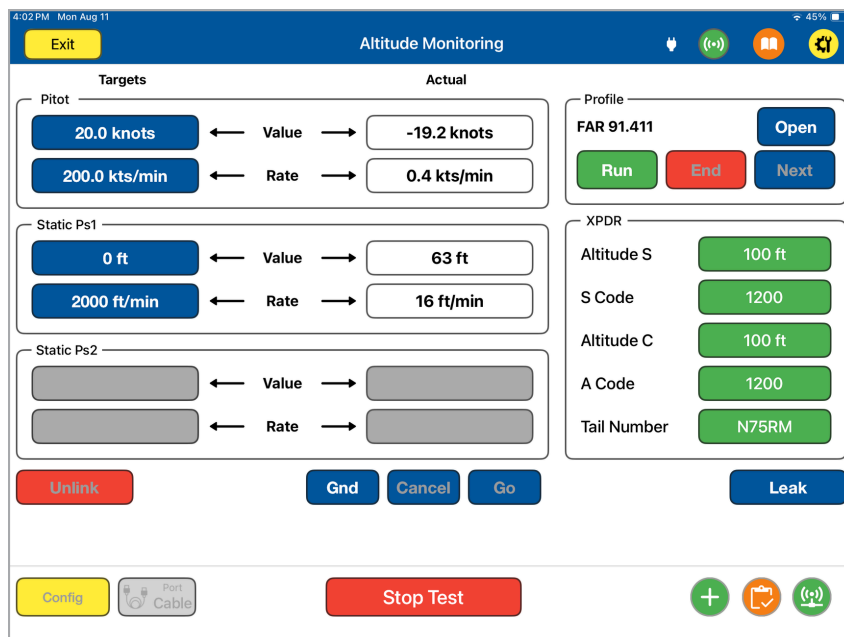
Commercially available tablets are used to control the ARTS, creating a cost-effective and simple test setup. With clear menus, hot keys, predefined scenarios, customizable limits, and intuitive functions, the ARTS is easy to learn and use.



Each test function has a dedicated page giving the operator full access to test parameters, configuration, and results. All test functions can be setup and completed by a single technician. The familiarity of tablets and the simplicity of the ARTS software minimizes training time. If you can use a tablet, you can operate the ARTS.



From simple Go/No-Go tests to a full engineering diagnostic – the ARTS provides all the capabilities, speed and details that you need.



## Unique Feature:

Altimeter checks and simultaneous Mode S output tests (FAR 91.413) are simplified by controlling a Laversab ADTS through the ARTS 7000.

**CAPABILITY & BASE SPECIFICATIONS**

<b>COMMUNICATIONS</b>	AM / FM HF SSB SelCal CPDLC-VDL Mode 2 (optional)
<b>NAVIGATION</b>	VOR ILS - Localizer & Glide Slope Marker Beacon
<b>ELT</b>	121.5 / 243 / 406 MHz
<b>DME</b>	DME DME & ILS DME & VOR
<b>TRANSPONDER</b>	Mode S ATCRBS Mode A & C ADS-B IN/OUT TIS & TIS-B 1090 MHz (optional) UAT 978MHz: TIS-B, FIS-B, ADS-B (optional)
<b>TCAS</b>	TCAS 1 & 2, ACAS (optional)
<b>GPS</b>	GPS Signal Simulator
<b>VSWR</b>	VSWR meter Distance to Fault
<b>TOOLS</b>	Power meter Frequency counter
<b>AIR DATA INTEGRATION</b>	ARTS-7000 & Laversab ADTS integration
<b>POWER REQUIREMENT</b>	90-260 VAC, 47-65 Hz or 28 VDC, 25 W Or Removable battery: 8-hour operation
<b>INTERFACES</b>	RS232, USB
<b>DIMENSIONS &amp; WEIGHT</b>	Main unit: 22" x 14" x 9"; 30 lbs.
<b>ENVIRONMENTAL</b>	Operating temp: -20° to 60°C Storage temp.: -40° to 75°C Humidity: 5 to 100%

Please see full technical Data sheet for details.

**ARTS-7000**