

# LINKS Platform - Rig Software

Collect rig data from any system.

## OVERVIEW

The LINKS Platform is a modular software package that can be deployed to the rig or any industrial locations. Capabilities can be selected based on user need. Core capabilities include:

- WITS0 to WITSML™ Convertor
- PLC to WITSML™ Convertor
- Depth Tracking
- EDR Full Software
- Data Aggregator & Data Logger

## COMMON APPLICATIONS

### EDR: Rig Data Collection

Combined with Laversab EDRs to collect surface data across the drilling rig.

### WITS0 to WITSML™ data conversion

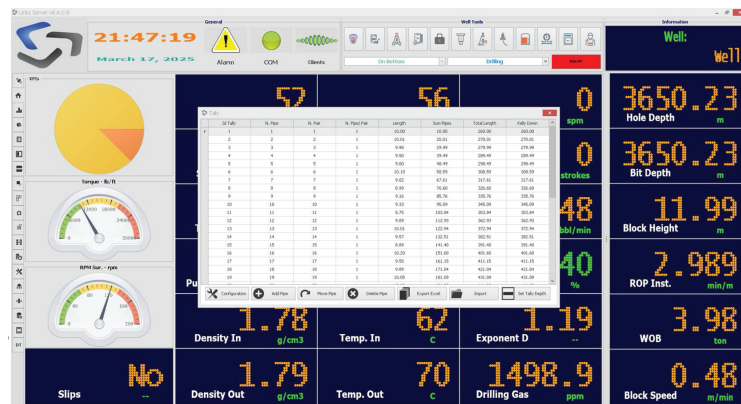
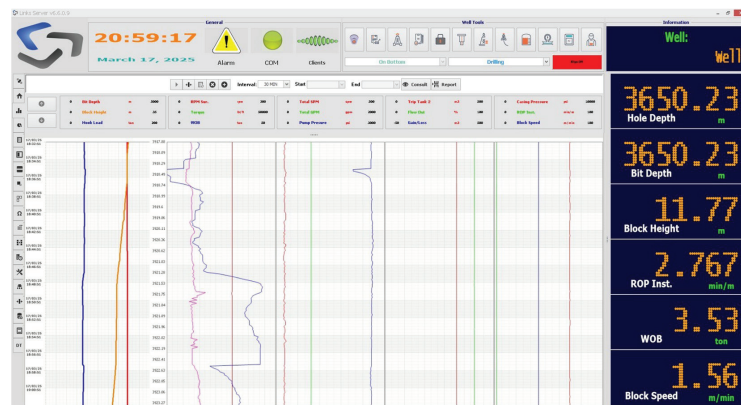
Access WITS0 data on the rig and publish to a WITSML™ server.

### PLC to WITSML™ data conversion

Convert data from any PLC-based system to WITSML™. Publish to a WITSML™ server and correlate to depth data.

### Depth Tracking

Collect depth information from rig sensors, correlate data, and publish to a WITSML™ server if required.



## The Laversab Advantage



### OUTSTANDING SERVICE...

- ✓ Easily customizable solutions
- ✓ Simple setup and operation
- ✓ Support over email/phone/onsite



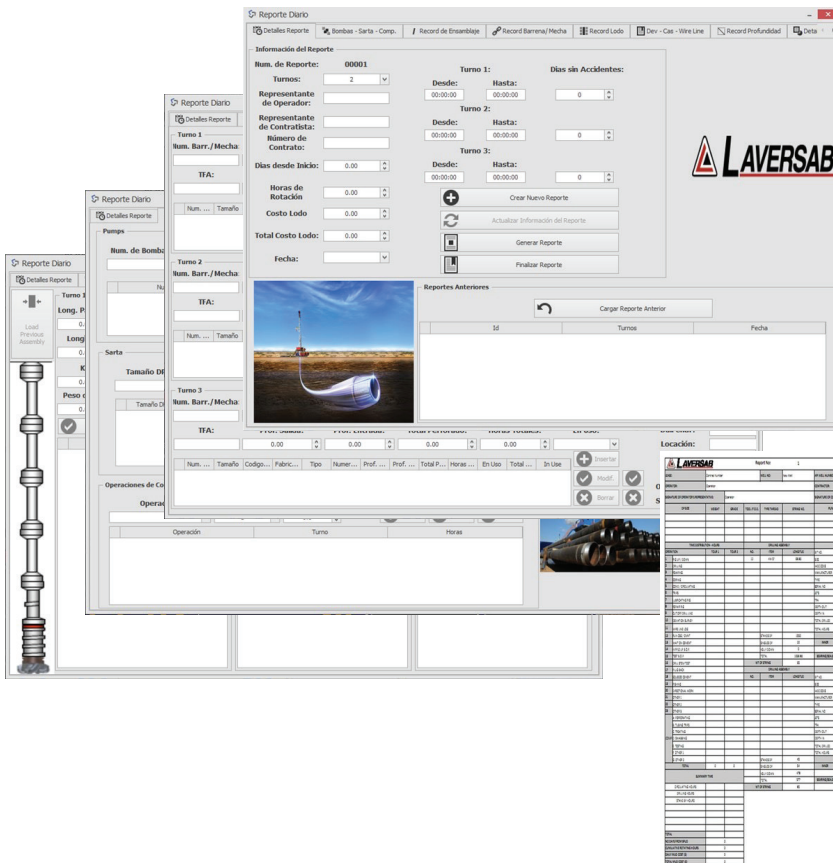
### ...FOR A LIFETIME.

- ✓ 3-Year warranty (+2 years opt.)
- ✓ Rig-up & operation training
- ✓ Flexible payment options

The LINKS Software Platform is a scalable tool that you can use for applications ranging from simple data conversion to entire drilling rig surface data acquisition.

<b>Software Name</b>	LINKS Platform
<b>Software Type</b>	On-Board Application
<b>Modules</b>	Lithology, Swab Analysis
<b>Tools</b>	Video Surveillance, Chat
<b>Reports</b>	Time-based & Depth-based (on demand) Daily report, Tour sheet, KPI report
<b>Wellbore Config</b>	Drill String Config, Pipe Tally, Tanks Config, Bit Record, Mud Record, Casing Record, Operations & Crew Record
<b>Visualizations</b>	Dashboard View Indicators: Numerics, Gauges, Functional Charts: Line, Bar, Pie 3-D Trajectory & Bird's eye view Hydraulics & Riser compensation Dynamic updates in Real-time

<b>Alarms</b>	Hardware & User-defined alarms
<b>Languages</b>	English & Spanish
<b>Variables</b>	300+ variables per rig
<b>Data Formats</b>	WITS 0, Ascii, Excel, LAS 2.0, LAS 3.0, WITSML™ 1.3.1 & 1.4.1
<b>Protocols</b>	Modbus, TCP/IP, Modbus Serial, OPC, PLCs (Siemens & Rockwell)
<b>Display update rate</b>	< 1 second
<b>Database update rate</b>	0.25 sec to 5 sec (user-configurable)
<b>Formulas</b>	User-defined
<b>Operating System</b>	Windows 7 or later (64-bit)



## Purchase Options

Daily subscription	✓
Monthly subscription	✓
Annual subscription	✓
Purchase	✓

