

# Rig Floor Computers (10", 15", 19") ATEX/IECEX Zone 2

*Innovative solutions for hazardous locations to drive efficiency.*

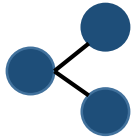
## SIMPLIFY



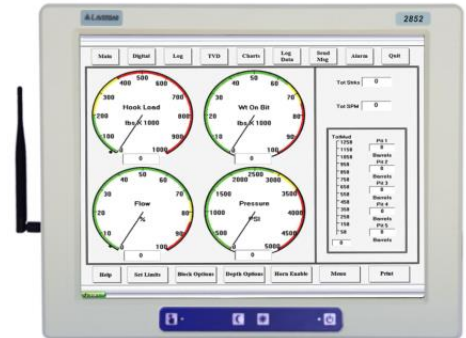
- ✓ Integrate customer DAQ/decoder & software into a fully certified solution
- ✓ Reduce cabling with wireless interface to Safe-Area systems or remote data-hubs
- ✓ Remove need for 'barrier box'
- ✓ Hangar, VESA, & Panel-mount ready



## CONNECT



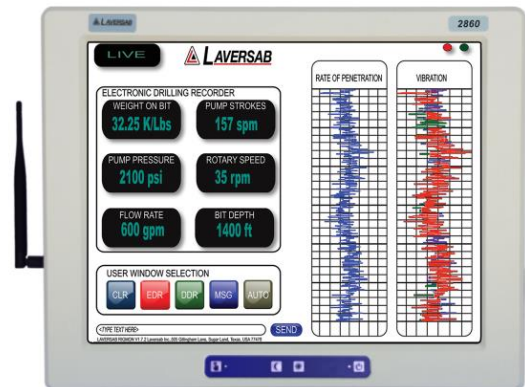
- ✓ Directly connect to pressure transmitters, EM Lines or virtually any data source
- ✓ Program tools directly from the Rig Floor computer



## PERFORM



- ✓ Display, record and log all relevant drilling parameters with custom software
- ✓ Reduce rig-up time
- ✓ Reliable operation from -40°C to +60°C
- ✓ Fully sunlight viewable



### The Laversab Advantage



#### OUTSTANDING SERVICE...

- ✓ Easily customizable solutions
- ✓ Simple setup and operation
- ✓ 24/7/365 support



#### ...FOR A LIFETIME.

- ✓ 3-Year warranty (+2 years opt.)
- ✓ Rig-up & operation training
- ✓ High-performance CPU options

## 25+ Laversab Custom MWD Decoder + Integrated DAQ Systems

### Applications

- Full function high performance **Zone 2 Computer** for high reliability under extreme conditions
- **Customer-specific DAQ card or Decoder board can be integrated and Zone 2 certified**

### Common Uses

- Rig-Floor Computer
- Electronic Drilling Recorder
- MWD Surface System
- Vehicle-mounted Computer
- Driller's Display
- Remote Monitoring System
- Automated and Unmanned Drilling applications

### Technical Specifications

<b>Product Type</b>	PC Workstation
<b>Certifications</b>	ATEX / IECEx Zone-2
<b>Display</b>	10.4" / 15" / 19" scratch resistant touch-screen with polarizer
<b>Brightness</b>	1300 nits; Sunlight readable with adjustable brightness
<b>Processor</b>	Intel® Atom 1.91 GHz Quad-core or Intel® Core i7 2.3 GHz Quad-core
<b>Operating System</b>	Windows 10 Pro (or other)
<b>Data storage</b>	128 GB to 512 GB SSD
<b>Memory</b>	8 GB to 32 GB DRAM
<b>Application software</b>	Pre-loaded or installed via USB or network

<b>Wireless LAN</b>	2.4GHz or 900MHz options
<b>External I/O</b>	2x USB, 2x RS-232, LAN

<b>Power</b>	90-260 VAC, 47-63 Hz, 150 VA
<b>Operating Temp</b>	-40°C to +60°C
<b>Storage Temp</b>	-40°C to +75°C
<b>Humidity</b>	5 to 100%
<b>Sealing</b>	IP66 on all six sides
<b>Weight</b>	2804: 9 lbs/ 2852: 15 lbs/ 2860: 22 lbs
<b>Dimensions</b>	2804: 11.4"(w) 9.4"(h) 4.0"(d) 2852: 15.2"(w) 12.3"(h) 4.0"(d) 2860: 18.4"(w) 15.4"(h) 4.0"(d)
<b>Mounting</b>	Hanger & Panel mount; VESA-75/100
<b>Operating shock</b>	50 G, 11 ms half-sine
<b>Operating vibration</b>	3.0 G RMS, 5 to 500 Hz